

PROFILE

2023-2024

CEEB CODE: 751344

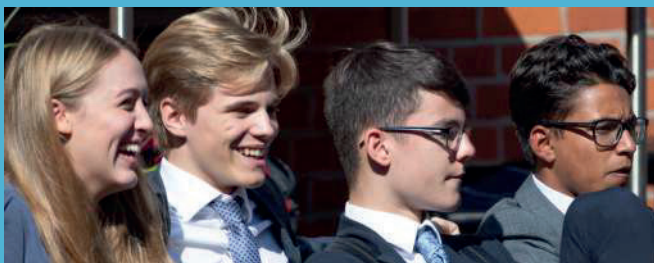
SCHOOL & COMMUNITY

Latymer Upper and Prep School, whose Foundation dates back to 1624, is a vibrant, academically selective, co-educational independent day school for children aged 7-18. A high number of international students make up the 1440 pupil body, with some 20% of students able to access a flagship financial aid programme.

ACADEMIC ROUNDED & GROUNDED

Rooted in tradition but forward-thinking, Latymer offers a rich education that is rigorous but balanced, imparting a love of learning, academic breadth, a sense of social responsibility, and a global outlook. Latymerians are scholarly and engaged, compassionate and thoughtful, independently-minded but conscious of their impact on the community and their role in society.

Student wellbeing is central to our ethos. We have a Peer Mentoring scheme where senior students are trained to mentor younger pupils, and our school-wide wellbeing initiative, BOUNCE, is designed to encourage self-reliance and resilience. Students are encouraged to shape the school's values through participation in school committees covering issues such as Sustainability and Equality & Diversity.



LATYMER UPPER & PREP SCHOOL

ACADEMICS

The emphasis in the Sixth Form programme at Latymer is on the development of academic depth and breadth, intellectual and personal independence, social responsibility, and a global perspective. The hallmark of this is the Latymer Diploma, where alongside A Levels or Pre-U, students complete core courses in Knowledge and Research Skills and Life Skills, take several ten-week electives, undertake a personal research project, and complete a service placement within the school or with one of our partners.

Academics at Sixth Form - equivalent to Grades 11-12

- Core of three A Level or Pre-U subjects
- Optional fourth A Level, AS Level, or EPQ (Extended Project Qualification)
- Latymer Research Report for those students not completing an EPQ
- A choice of over 30 ten-week elective courses

In line with peer institutions in the UK, we do not rank our students or calculate Grade Point Averages.

A Level Grades	2022-23	A*	A	B	C	D	E
Art & Design	41	63%	20%	10%	7%	0%	0%
Sciences	354	39%	39%	16%	3%	2%	1%
Mathematics	294	44%	37%	12%	4%	3%	0%
Classics	28	39%	47%	7%	7%	0%	0%
Performing Arts	27	48%	33%	15%	0%	4%	0%
Social Sciences	178	45%	36%	9%	8%	2%	0%
English	97	57%	22%	18%	3%	0%	0%
Modern Languages	62	35%	49%	16%	0%	0%	0%
Humanities	164	31%	41%	24%	4%	0%	0%
Total	1245	42%	36%	15%	4%	2%	1%

GCSE Grades	2022-23	%
9	2111	59%
8	854	24%
7	428	12%
6	127	4%
5-1	78	1%
Total	3598	100

SPORTS & EXTRACURRICULARS

Team sports play a central role in the life of the school, with time set aside each week for physical activity and over 100 coached teams across all age ranges. The major sports offered at Latymer are rugby, soccer, and rowing for the boys, and field hockey, netball, rounders, and rowing for the girls, with cricket offered to both in the summer. We have a state-of-the-art sports centre on the King Street site, extensive playing fields in Wood Lane and Chiswick, and a boathouse overlooking the Thames.

Latymerians have the opportunity to participate in over 100 clubs and societies at the school. Music and drama are particularly strong, with four plays performed each year, and twelve school choirs and orchestras that perform regularly on site and at major London venues. Other extracurricular activities include subject extension classes, olympiads, debate and discussion societies, creative clubs, and the Duke of Edinburgh Award. We also run a dedicated off-site Activities Week each year in June.

DISCIPLINARY POLICY

Latymerians are encouraged to take personal responsibility for their academic and personal conduct. We will disclose on request any serious disciplinary violations relating to academic or behavioural misconduct.

FINANCIAL AID

We are committed to making a Latymer education accessible to high-achieving students from low income backgrounds. We currently provide financial aid to 20% of students and aim to increase that to 25% by 2024 through our Inspiring Minds campaign. We also provide a number of merit-based scholarships for exceptional ability in academics, sport, music, art, or drama.

LEAVERS' DESTINATIONS 2021-2023

UNITED STATES

Berklee College of Music	1
Boston University	1
Brown University	2
Carnegie Mellon University	3
Columbia University	1
Cornell University	1
Duke University	3
Georgetown	3
MIT	2
New York University	3
Princeton University	1
Santa Clara University	1
Sarah Lawrence College	1
UC Berkeley	1
UCLA	2
University of Chicago	4
University of Notre Dame	2
University of Pennsylvania	11
University of Virginia	3
USC (University of Southern California)	2
Vassar College	1
Wesleyan University	1
Yale University	2

CANADA

University of Toronto	2
McGill University	7

EUROPE

American University Paris	1
Bocconi University	6
ETH Zurich	2
ICAI Comillas	1
IE University Madrid	2
Sciences Po	1
Trinity College Dublin	1
University of Valencia	1

OTHER

Trinity-Columbia Dual BA Pro-gramme	2
University of Melbourne	1

UNITED KINGDOM

Arts University Bournemouth	1
Brighton and Sussex Medical School	2
Cardiff University	6
City & Guilds of London Art School	2
City, University of London	1
Durham University	20
Dyson Institute of Engineering and Technology	1
Imperial College London	20
King's College London, University of London	14
Kingston University	1
Lancaster University	1
London School of Economics and Political Science, University of London	6
Loughborough University	9
Middlesex University	1
Newcastle University	10
Northern Royal College of Music	1
Oxford Brookes University	2
Queen Mary University of London	6
Queen's University Belfast	1
Royal Academy of Music	1
SOAS University of London	2
Staffordshire University	1
Swansea University	1
The University of Edinburgh	39
UCL (University College London)	27
University of Bath	25
University of Birmingham	8
University of Brighton	3
University of Bristol	45
University of Cambridge	30
University of Exeter	16
University of Glasgow	2
University of Kent	1
University of Leeds	16
University of Liverpool	1
University of Manchester	25
University of Nottingham	6
University of Oxford	25
University of Reading	1
University of Sheffield	5
University of Southampton	5
University of St Andrews	6
University of Strathclyde	1
University of Surrey	2
University of Sussex	4
University of the Arts London (CCW)	1
University of Warwick	20
University of Westminster, London	1
University of York	6

KEY CONTACTS

Saanya Gulati

Head of International
University Advising

sng@latymer-upper.org

Mark Holmes

Director of University Admissions

mgh@latymer-upper.org

Sam Adams

Assistant Head (Sixth Form)

Ian Emerson

Deputy Head (Academic)

Susan Wijeratna

Head

Latymer Upper School

King Street
London
W6 9LR

